



Changes in Supply and Demand Estimates (from 15 May 2020)

There are no major changes.

Minor changes (less than 40,000 tons):

*Argentina
Mali
Sudan
United States*

World Cotton Supply and Demand

	2018/19		2019/20		2020/21	
	million tonnes	change	million tonnes	change	million tonnes	change
Beginning Stocks	18.82	0.00	18.63	0.00	21.75	0.00
Production	25.68	0.00	26.19	0.00	25.12	-0.07
Supply	44.50	0.00	44.81	0.00	46.87	-0.07
Consumption	26.01	0.00	23.06	0.00	23.75	0.00
Exports	9.08	0.00	8.34	0.00	8.47	0.00
Ending Stocks	18.63	0.00	21.75	0.00	23.12	-0.07

ICAC Price Projections

Season-average Cotlook A Index (US cents per pound).

Projections	Previous Month		This Month	
	Range	Midpoint	Range	Midpoint
2019/20*	68-75	71	70-73	72
2020/21**	45-72	57	47-74	59

* The price projection for 2019/20 is based on the ending stocks-to-mill use ratio in the world-less-China in 2017/18 (estimate), 2018/19 (estimate) and 2019/20 (projection), on the ratio of Chinese net imports to world imports in 2018/19 (estimate) and 2019/20 (projection), and the average price in 2018/19. The projection reflects a 95% confidence interval.

** The price projection for 2020/21 is based on the ending stocks-to-mill use ratio in the world-less-China in 2018/19 (estimate), in 2019/20 (projection) and in 2020/21 (projection), on the ratio of Chinese net imports to world imports in 2019/20 (projection) and 2020/21 (projection), and the price projection for 2019/20. The projection reflects a 95% confidence interval.



Falling Consumption and Rising Stock Levels

Global consumption for 2019/20 is expected to be 23 million tonnes, an 11.3% decrease from the previous season. With global production expected for 2019/20 at 26.2 million tonnes, a 2% increase from the previous season, ending stock levels are expected to increase to 21.75 million tonnes, the highest level in the past five seasons. Consumption and trade have decreased in the wake of the containment measures to control the Covid-19 pandemic and all major consuming countries have been impacted by the retail losses that have led to decreased orders as well as the closure of mills to reduce the spread of Covid-19. Consumption in China, the world's leading country for mill-use, is expected to fall by 12% to 7.25 million tonnes from the previous season. With lower international cotton prices and as trade negotiation with the US move forward, China's consumption and import estimate have increased month to month, with imports currently estimated at 1.9 million tonnes for 2019/20 as manufacturing activity begins to resume and to refresh reserve stocks.

Consumption in India is expected to fall by 12% to 4.75 million tonnes. Stocks in India are estimated at 2.8 million tonnes, a historic high. With high minimum support prices, the CCI has accumulated a high level of stocks, putting downward pressure on domestic and international prices. With consumption slowing across the globe, the continued closure of mills and the reduction of the labour force, domestic mill-use has decreased to the lowest level in seven seasons. An increase in exports is anticipated as the CCI seeks export opportunities in nearby manufacturing countries.

Consumption decreases for 2019/20 are expected across the globe with losses concentrated in Asia and Southeast Asia. Consumption is expected to fall by 7% in Pakistan to 2.2 million tonnes, by 8% in Turkey to 1.4 million tonnes, by 8% in Vietnam to 1.4 million tonnes and by 25% in Bangladesh to 1.2 million tonnes.

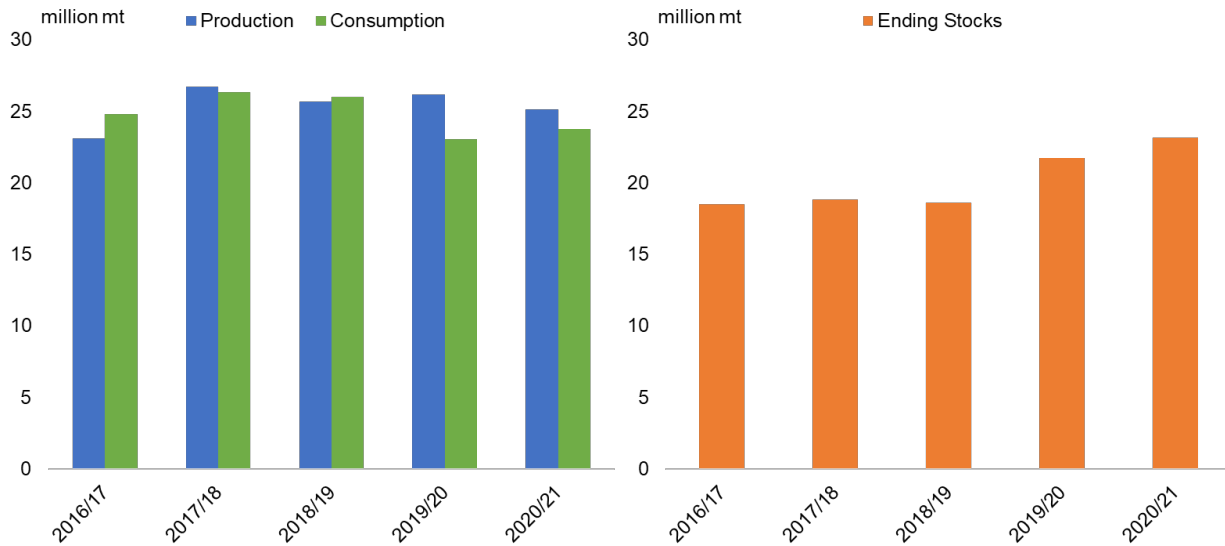
Consumption in the United States is expected to fall to 580,000 tonnes in 2019/20. Ending stock level in the United States is expected to be 1.9 million tonnes by the end of the 2019/20 season as exports are estimated to fall to 3 million tonnes, an 8% decrease from the previous season. Agricultural support policies for cotton continue and the 2020/21 crop is currently projected at 4.25 million tonnes on 4.6 million hectares, a 2% contraction in planted area. Despite low international prices, but with a possible trade deal with China, the United States is expected to export 3 million tonnes in 2020/21.

Consumption in Brazil is expected to fall by 11% to 650,000 tonnes for the 2019/20 season. Brazil has exported 1.75 million tonnes through April and will remain the second largest exporter behind the US with an expected 1.82 million tonnes exported by the end of the season.

Global trade is expected to fall to 8.34 million tonnes in 2019/20, a 9.6% decrease from the previous season. Recovery for the coming 2020/21 season is currently expected to be modest under the current IMF projections for economic recovery. In order to recover to the consumption levels of the 2018/19 season at 26 million tonnes, consumption growth would need to be over 12%. The ICAC's current consumption projection for 2020/21 is at 23.75 million tonnes, a 3% increase from this season. Prices

remain under pressure from the high stock levels, low consumption levels and high production levels for the 2020/21 season.

Falling Consumption Amidst Rising Production and Ending Stocks



Prices

The Secretariat's current price projection for the year-end 2019/20 average of the A Index has been revised to 72.8 cents per pound this month. The price projection for the year-end 2020/21 average of the A Index is 58.8 cents per pound this month.

Cotton This Month is published at the beginning of the month with the Cotton Update published mid-month. The Cotton Update is a mid-month report with updated information on supply/demand estimates and prices. The next **Cotton Update** will be released on **15 June 2020**. The next **Cotton This Month** will be released on **1 July 2020**.

Published at the start of each month by the Secretariat of the International Cotton Advisory Committee,
1629 K Street NW, Suite 702, Washington, DC 20006. Copyright © ICAC 2020.
Telephone: 202-463-6660; email: secretariat@icac.org.
No reproduction is permitted in whole or part without the express consent of the Secretariat.



International Cotton Prices

	Today	Change	Season Low	Season High	1 Year ago	2 Years ago
Current Cotlook A Index	65.45	-0.85	59.15	80.20	80.35	100.70
NY Futures Nearby Contract^a	57.59	-0.26	48.41	71.53	68.08	93.30
Basis^b	7.86	-0.59	7.60	12.32	11.02	7.45
2019/20 average to date	71.98					
2018/19 average	84.35					

^a Previous day's close.

^b Current A Index minus Nearby NY (previous close).

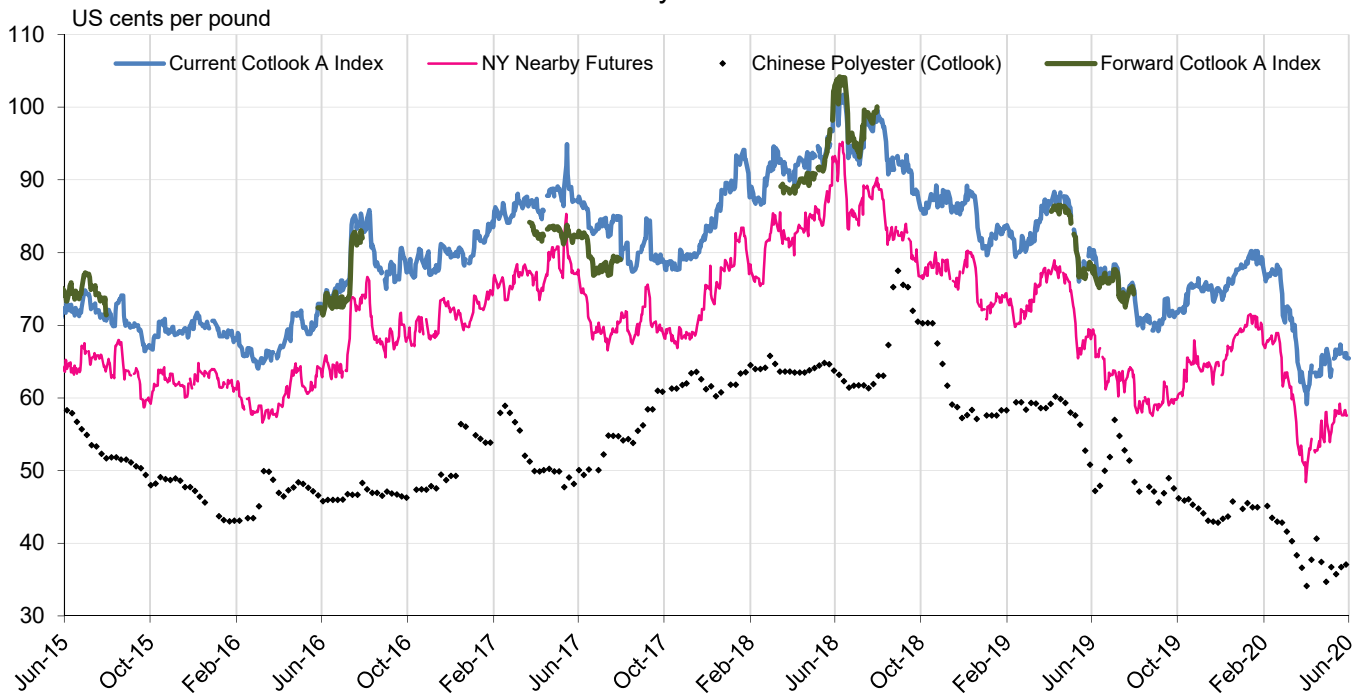
Source: Cotlook Ltd.; quotes in U.S. cents per pound.

China Domestic Cotton Prices

	Today	Change	Season Low	Season High	1 Year ago	2 Years ago
China Cotton Index (3128B)	75.2	1.60	70.9	92.5	95.8	118.6

Source: Beijing Cotton Outlook; mill-delivered prices; quotes in U.S. cents per pound (exchange rate from IMF).

Daily Prices



Published by the Secretariat of the International Cotton Advisory Committee,
1629 K Street NW, Suite 702, Washington, DC 20006. Copyright © ICAC 2020
Telephone: 202-463-6660; email: secretariat@icac.org.

No reproduction is permitted in whole or part without the express consent of the Secretariat.



Supply and Distribution of Cotton

Seasons begin on August 1

	2015/16	2016/17	2017/18	2018/19 Est.	2019/20 Proj.	2020/21 Proj.
million metric tonnes						
Beginning stocks						
World Total	22.95	20.31	18.48	18.82	18.63	21.75
China	14.12	12.65	10.35	9.03	8.88	9.25
USA	0.79	0.83	0.60	0.94	1.08	1.88
Production						
World Total	21.48	23.08	26.71	25.68	26.19	25.12
India	5.75	5.87	6.35	5.35	6.20	5.74
China	5.20	4.90	5.89	6.04	5.80	5.68
USA	2.81	3.74	4.56	4.00	4.34	4.25
Pakistan	1.54	1.66	1.80	1.67	1.32	1.31
Brazil	1.29	1.53	2.01	2.73	2.88	2.45
Uzbekistan	0.83	0.79	0.80	0.64	0.64	0.64
Others	4.07	4.59	5.32	5.26	5.01	5.06
Consumption						
World Total	24.14	24.79	26.35	26.01	23.06	23.75
China	7.60	8.28	8.50	8.25	7.25	7.80
India	5.30	5.15	5.42	5.40	4.75	4.75
Pakistan	2.15	2.15	2.35	2.36	2.20	2.16
Europe and Turkey	1.68	1.61	1.64	1.70	1.57	1.57
Bangladesh	1.32	1.41	1.66	1.58	1.18	1.21
Vietnam	1.01	1.17	1.51	1.51	1.39	1.42
USA	0.75	0.71	0.77	0.64	0.58	0.63
Brazil	0.66	0.69	0.68	0.73	0.65	0.65
Others	3.67	3.64	3.82	3.84	3.49	3.55
Exports						
World Total	7.54	8.19	9.02	9.08	8.34	8.47
USA	1.99	3.25	3.45	3.21	2.95	2.96
India	1.26	0.99	1.13	0.80	0.53	0.89
CFA Zone	0.98	1.00	1.06	1.18	1.16	1.21
Brazil	0.94	0.61	0.91	1.31	1.82	1.48
Uzbekistan	0.50	0.40	0.34	0.13	0.06	0.06
Australia	0.62	0.81	0.85	0.79	0.24	0.27
Imports						
World Total	7.59	8.09	8.99	9.22	8.34	8.47
Bangladesh	1.38	1.41	1.67	1.54	1.18	1.20
Vietnam	1.00	1.20	1.52	1.51	1.39	1.42
China	0.96	1.10	1.32	2.10	1.87	1.91
Turkey	0.92	0.80	0.88	0.76	0.62	0.62
Indonesia	0.64	0.74	0.76	0.69	0.63	0.64
Trade Imbalance 1/	0.06	-0.10	-0.04	0.14	0.00	0.00
Stocks Adjustment 2/	-0.03	-0.01	0.00	0.00	0.00	0.00
Ending Stocks						
World Total	20.31	18.48	18.82	18.63	21.75	23.12
China	12.65	10.35	9.03	8.88	9.25	8.99
USA	0.83	0.60	0.94	1.08	1.88	2.54
Ending Stocks/Mill Use (%)						
World less China 3/	46	49	55	55	79	89
China 4/	166	125	106	108	128	115
Cotlook Index A 5/	70.39	82.77	87.98	84.35		

1/ The inclusion of linters and waste, changes in weight during transit, differences in reporting periods and measurement error account for differences between world imports and exports.

2/ Difference between calculated stocks and actual; amounts for forward seasons are anticipated.

3/ World-less-China's ending stocks divided by world-less-China's mill use, multiplied by 100.

4/ China's ending stocks divided by China's mill use, multiplied by 100.

5/ US cents per pound.



2018/19 Supply and Use of Cotton by Country 1 June 2020

	Area	Yield	Prod	Beg Stocks	Imports	Cons	Exports	End Stocks	S/U *	S/MU **
	000 Ha	Kgs/Ha	000 Metric Tonnes						Ratio	Ratio
Canada				0.05	0.35	0.35		0.04	0.12	0.12
Cuba	4	269	1	1	2	3		1	0.19	0.19
Dom. Rep.					1	1		0	0.47	0.47
Mexico	245	1,692	414	182	183	440	113	226	0.41	0.51
USA	4,130	968	3,999	936	1	644	3,214	1,078	0.28	1.67
N. America	4,384	1,007	4,415	1,120	187	1,090	3,328	1,305	0.30	1.20
El Salvador				9	35	35		9	0.26	0.26
Guatemala				7	27	27		7	0.26	0.26
Honduras	0.14	318	0.04	0.19		0.00		0.23		
C. America	1	522	1	16	62	63		16	0.26	0.26
Argentina	333	773	257	347	1	167	118	320	1.12	1.91
Bolivia	4	640	3	2	1	3	0.22	2	0.50	0.53
Brazil	1,618	1,685	2,726	1,598	4	730	1,310	2,287	1.12	3.13
Chile				0.02	0.05	0.05		0	0.41	0.41
Colombia	15	870	13	4	27	40		4	0.10	0.10
Ecuador	1	439	1	3	10	11		3	0.31	0.31
Paraguay	10	420	4	2	2	3	2	3	0.72	1.35
Peru	25	819	21	39	47	59	1	46	0.77	0.78
Uruguay				0.001	0.009	0.009		0.001	0.06	0.06
Venezuela	15	392	6	3	5	10		3	0.30	0.30
S. America	2,022	1,499	3,030	1,997	96	1,024	1,431	2,669	1.09	2.61
Algeria				0.06	1	1		0	0.05	0.05
Egypt	142	782	111	98	105	145	71	98	0.46	0.68
Morocco				3	7	7		3	0.38	0.38
Sudan	180	578	104	16		18	86	16	0.15	0.89
Tunisia				3	12	12		3	0.22	0.22
N. Africa	322	668	215	120	126	184	157	120	0.35	0.65
Benin	656	449	295	146		1	292	147	0.50	107.48
Burkina Faso	646	283	183	137		3	200	116	0.57	38.82
Cameroon	250	530	132	60		2	125	66	0.52	34.85
Cent. Afr. Rep.	32	251	8	0.32			4	4	0.93	
Chad	60	117	7	14		0.26	14	6	0.43	24.32
Cote D'Ivoire	392	514	202	56		2	195	61	0.31	29.77
Guinea	12	286	3	1			3	2	0.58	
Madagascar				3				3		
Mali	698	395	276	66		2	300	40	0.13	19.79
Niger	4	469	2	0.24		1	1	0	0.11	0.25
Senegal	22	285	6	1		1	5	1	0.18	1.41
Togo	180	313	56	19			47	28	0.59	
F. Africa	2,953	396	1,171	504		12	1,187	475	0.40	38.60
Angola	3	304	1	0.29		1	0.24	0.29	0.34	0.48
Ethiopia	78	737	57	19	6	52	7	22	0.37	0.42
Ghana	15	373	5	12		1	4	12	2.22	9.28
Kenya	13	149	2	2	1	3	0.06	1	0.33	0.34
Malawi	86	248	21	3		3	9	12	0.99	3.99
Mozambique	140	151	21	15		1	20	15	0.69	
Nigeria	250	205	51	22	1	28	29	17	0.31	0.63
South Africa	42	1,142	48	39	15	19	31	51	1.03	2.71
Tanzania	420	193	81	23		44	43	18	0.20	0.40
Uganda	81	430	35	22		2	33	22	0.63	12.94
Congo, Dr				2	7	7		2	0.30	0.30
Zambia	121	392	47	48		2	34	60	1.68	
Zimbabwe	212	292	62	25		3	44	39	0.83	13.98
S. Africa	1,481	294	436	244	54	193	257	285	0.63	1.48
Kazakhstan	113	665	75	51	0	13	58	55	0.76	4.14
Kyrgyzstan	14	851	12	4	3	1	13	5	0.33	4.79
Tajikistan	191	535	102	34		15	85	36	0.36	2.43
Turkmenistan	534	561	300	91		141	143	106	0.37	0.75
Uzbekistan	900	712	641	259		630	127	144	0.19	0.23
C. Asia	1,752	645	1,130	439	3	800	427	345	2.01	0.43



2018/19 Supply and Use of Cotton by Country (cont'd) 1 June 2020

	Area	Yield	Prod	Beg Stocks	Imports	Cons	Exports	End Stocks	S/U *	S/MU **
	000 Ha	Kgs/Ha	000 Metric Tonnes							Ratio
Austria				1	3	3		1	0.18	0.18
Azerbaijan	143	672	96	34		20	66	44	0.50	2.13
Belarus				4	11	11		4	0.34	0.34
Belgium				1	7	3	4	1	0.19	0.43
Bulgaria	1	324	0.28	1	6	6	0.08	1	0.17	0.17
Czech Rep.				0.22	2	2		0.10	0.04	0.04
Denmark					0.01	0.01			0.12	
Estonia										
Finland										
France				2	9	8	1	1	0.14	0.17
Germany				9	19	16	3	9	0.49	0.57
Greece	277	1,083	300	38	7	16	298	31	0.10	1.89
Hungary				0.02				0		
Ireland				0.02	0.16	0.16		0	0.11	0.11
Italy				8	34	32	2	8	0.22	0.23
Latvia				0.01	0.26	0.20	0.06	0	0.03	0.04
Lithuania				0.10				0		
Moldova				1	2	2		1	0.34	0.34
Netherlands				0.45	4	4		0	0.11	
Norway										
Poland				1	2	2	0.29	1	0.60	0.63
Portugal				7	38	38	1	7	0.19	0.19
Romania				0.04	0.34	0.34		0	0.10	0.10
Russia	0.02	1,750	0.04	6	22	22	0.04	6	0.28	0.28
Slovak Rep.										
Spain	65	1,092	71	38	3	3	52	40	0.56	11.94
Sweden				0.01	0.01	0.01		0		
Switzerland				0.16	1	0.48	0.35	0	0.19	0.33
Ukraine				0.44	2	2		0	0.26	0.26
United Kingdom				0.03	0.25	0.25		0	0.12	0.12
Former Yugoslavia				1	7	7		1	0.19	0.19
Europe	486	962	467	154	179	199	427	158	0.25	0.79
Including EU-27	343	1,083	371	108	136	136	301	102	0.23	0.75
China	3,367	1,794	6,040	9,033	2,100	8,250	30	8,885	1.07	1.08
Hong Kong				30	0.47	0.41	0.06	30	51.93	
Australia	343	1,414	485	452		6	791	140	0.18	23.14
Indonesia	6	618	3	70	685	700		59	0.08	0.08
Japan				8	50	51		7	0.14	0.14
Korea, D.R.				1	5	5		1	0.24	0.24
Korea, Rep.				40	170	171	1	38	0.22	0.22
Malaysia				13	162	94	68	13	0.08	0.14
Philippines	0.01	570	0.01	5	13	13		5	0.35	0.35
Singapore				0	6		6	0	0.05	
Taiwan				21	138	138		21	0.15	0.15
Thailand	2	520	1	56	234	236		56	0.24	0.24
Vietnam	0.30	667	0.20	196	1,510	1,506		200	0.13	0.13
E. Asia	351	1,395	490	861	2,974	2,921	867	538	0.14	0.18
Afghanistan	36	387	14	5		4	11	4	0.25	0.90
Bangladesh	45	768	35	422	1,544	1,579		422	0.27	0.27
India	12,600	425	5,350	1,989	340	5,400	800	1,479	0.24	0.27
Myanmar	239	634	152	69	56	207	0	69	0.33	0.34
Pakistan	2,325	718	1,670	819	638	2,358	16	754	0.32	0.32
Sri Lanka				0	2	2		0	0.12	0.12
S. Asia	15,248	474	7,222	3,306	2,580	9,552	1,180	2,729	0.26	0.29
Iran	71	710	50	52	71	116		58	0.50	0.50
Iraq	9	362	3	2	5	8		2	0.24	0.24
Israel	4	2,009	9	2			8	2	0.27	
Syria	18	958	18	9		14	4	9	0.49	0.61
Turkey	520	1,878	977	918	762	1,555	105	997	0.60	0.64
Sub Total	626	1,691	1,058	987	855	1,713	117	1,071	0.59	0.63
World Total	33,011	778	25,682	18,816	9,219	26,009	9,079	18,629	0.72	0.72

*/ Ending stocks divided by consumption plus exports.

Subtotals and total include countries not shown.

**/ Ending stocks divided by consumption.



2019/20 Supply and Use of Cotton by Country 1 June 2020

	Area	Yield	Prod	Beg Stocks	Imports	Cons	Exports	End Stocks	S/U *	S/MU **
	000 Ha	Kgs/Ha	000 Metric Tonnes							Ratio
Canada				0.04	0.31	0.31		0.04	0.13	0.13
Cuba	4	269	1	1	2	3		1	0.19	0.19
Dom. Rep.					1	1		0	0.47	0.47
Mexico	224	1,644	369	226	117	396	90	226	0.46	0.57
USA	4,700	923	4,336	1,078	1	581	2,954	1,880	0.53	3.24
N. America	4,933	954	4,707	1,305	122	983	3,044	2,107	0.52	2.14
El Salvador				9	35	35		9	0.24	0.24
Guatemala				7	27	27		6	0.23	0.23
Honduras	0.10	318	0.03	0.23		0.00		0.27		
C. America	1	522	0.50	16	61	63		15	0.24	0.24
Argentina	455	736	335	320	1	134	94	428	1.88	3.19
Bolivia	4	641	3	2	1	3	0.2	2	0.50	0.53
Brazil	1,671	1,723	2,879	2,287	3	650	1,823	2,697	1.09	4.15
Chile				0	0	0		0	0.41	0.41
Colombia	21	847	17	4	19	36		4	0.11	0.11
Ecuador	1	439	1	3	10	11		3	0.31	0.31
Paraguay	10	420	4	3	1	2	4	2	0.34	0.98
Peru	24	819	20	46	40	59	1	46	0.78	0.79
Uruguay				0.001	0.01	0.01		0.001	0.06	0.06
Venezuela	14	392	6	3	5	10		3	0.30	0.30
S. America	2,200	1,483	3,264	2,669	80	905	1,922	3,185	1.13	3.52
Algeria				0.06	1	1		0.06	0.07	0.07
Egypt	102	657	67	98	83	102	48	98	0.66	0.97
Morocco				3	7	7		3	0.40	0.40
Sudan	180	722	130	16		18	96	32	0.28	1.75
Tunisia				3	12	12		3	0.22	0.22
N. Africa	282	699	197	120	103	140	145	136	0.48	0.97
Benin	700	450	315	147		1	265	196	0.74	204.27
Burkina Faso	735	283	208	116		3	183	139	0.75	46.20
Cameroon	250	559	140	66		2	127	77	0.60	40.62
Cent. Afr. Rep.	34	252	9	4			9	4	0.44	
Chad	248	298	74	6		0.20	60	20	0.33	100.61
Cote d'Ivoire	426	514	219	61		2	189	88	0.46	43.33
Guinea	12	287	4	2			4	2	0.44	
Madagascar				3				3		
Mali	782	390	305	40		2	265	77	0.29	38.63
Niger	5	470	2	0.24		1	1	0	0.11	0.25
Senegal	20	255	5	1		1	5	0	0.05	0.38
Togo	180	311	56	28			53	31	0.59	
F. Africa	3,392	394	1,336	475		12	1,161	638	0.54	53.90
Angola	3	308	1	0.29		1	0.28	0.29	0.33	0.48
Ethiopia	82	741	60	22	3	54	7	24	0.40	0.45
Ghana	15	375	6	12		1	4	12	2.14	9.24
Kenya	25	220	6	1	1	4	0	4	0.87	0.88
Malawi	85	249	21	12		3	18	12	0.55	3.92
Mozambique	147	152	22	15		1	21	15	0.66	
Nigeria	250	205	51	17	1	28	25	17	0.33	0.63
South Africa	28	1,017	29	51	14	19	22	54	1.33	2.84
Tanzania	441	247	109	18		45	41	40	0.47	0.90
Uganda	89	416	37	22		4	30	25	0.75	6.85
Congo, Dr				2	7	7		2	0.30	0.30
Zambia	118	393	46	60		2	30	74	2.29	
Zimbabwe	212	292	62	39		3	59	39	0.64	13.99
S. Africa	1,515	299	454	285	52	199	259	332	0.73	1.67
Kazakhstan	117	669	78	55	0.05	13	58	61	0.86	4.56
Kyrgyzstan	14	855	12	5	3	1	13	5	0.36	5.41
Tajikistan	196	538	106	36		15	82	45	0.47	3.04
Turkmenistan	545	564	307	106		141	149	123	0.42	0.87
Uzbekistan	900	712	641	144		578	64	144	0.22	0.25
C. Asia	1,772	646	1,144	345	3	748	366	378	2.33	0.51



2019/20 Supply and Use of Cotton by Country (cont'd) 1 June 2020

	Area	Yield	Prod	Beg Stocks	Imports	Cons	Exports	End Stocks	S/U *	S/MU **
	000 Ha	Kgs/Ha			000 Metric Tonnes				Ratio	Ratio
Austria				1	3	3		1	0.19	0.19
Azerbaijan	146	677	99	44		29	63	51	0.55	1.73
Belarus				4	11	11		4	0.34	0.34
Belgium				1	7	3	4	1	0.19	0.44
Bulgaria	1	324	0.26	1	6	6	0.08	1	0.17	0.17
Czech Rep.				0.10	2	2		0.14	0.07	0.07
Denmark										
Estonia										
Finland										
France				1	8	8	1	1	0.11	0.12
Germany				9	16	15	3	8	0.43	0.51
Greece	277	1,264	350	31	7	16	320	51	0.15	3.18
Hungary				0.02				0		
Ireland				0.02	0.15	0.15		0	0.12	0.12
Italy				8	32	31	1	8	0.23	0.24
Latvia				0.01	0.26	0.20	0.06	0	0.03	0.04
Lithuania				0.10				0		
Moldova				1	2	2		1	0.34	0.34
Netherlands				0.45	4	4		0	0.11	
Norway										
Poland				1	2	2	0.29	1	0.59	0.65
Portugal				7	36	36	1	7	0.20	0.20
Romania				0.04	0.33	0.33		0	0.11	0.11
Russia	0.02	1,759	0.04	6	22	22	0	6	0.27	0.27
Slovak Rep.										
Spain	66	1,061	70	40	3	3	52	45	0.66	13.83
Sweden				0.01	0.01	0.01		0.01		
Switzerland				0.16	1	0.46	0.35	0.16	0.19	0.34
Ukraine				0.44	2	2		0.44	0.27	0.27
United Kingdom				0.03	0.25	0.25		0.03	0.11	0.11
Former Yugoslavia				1	7	7		1	0.19	0.19
Europe	490	1,060	519	158	172	203	445	188	0.29	0.93
Including EU-27	344	1,222	420	102	129	131	301	125	0.29	0.96
China	3,300	1,758	5,800	8,885	1,866	7,250	30	9,250	1.27	1.28
Hong Kong				30	0.23	0.39	0.06	30	53.01	
Australia	61	2,231	135	140		6	235	34	0.14	5.93
Indonesia	5	621	3	59	630	630		62	0.10	0.10
Japan				7	48	48		7	0.14	0.14
Korea, D.R.				1	5	5		1	0.24	0.24
Korea, Rep.				38	136	136		38	0.28	0.28
Malaysia				13	162	101	61	13	0.08	0.13
Philippines	0.01	573	0.01	5	14	14		5	0.34	0.34
Singapore				0.33	6		6	0	0.05	
Taiwan				21	104	104		21	0.20	0.20
Thailand	2	522	1	56	211	212		56	0.26	0.26
Vietnam	0.30	667	0.20	200	1,385	1,386		200	0.14	0.14
E. Asia	68	2,047	140	538	2,701	2,641	302	436	0.15	0.16
Afghanistan	36	387	14	4		4	11	3	0.19	0.68
Bangladesh	46	772	35	422	1,184	1,184		458	0.39	0.39
India	12,700	488	6,200	1,479	450	4,752	528	2,849	0.54	0.60
Myanmar	239	634	152	69	24	187		59	0.31	0.31
Pakistan	2,631	502	1,320	754	823	2,204	10	682	0.31	0.31
Sri Lanka				0.20	2	2		0	0.11	0.11
S. Asia	15,655	493	7,723	2,729	2,484	8,336	1,180	4,051	0.46	0.49
Iran	71	711	50	58	54	104		58	0.56	0.56
Iraq	9	362	3	2	5	8		2	0.24	0.24
Israel	4	1,851	8	2			8	2	0.28	
Syria	18	968	17	9		14	3	9	0.51	0.63
Turkey	520	1,567	815	997	616	1,431	71	926	0.62	0.65
Sub Total	625	1,433	895	1,071	693	1,576	83	1,000	0.60	0.63
World Total	34,251	765	26,185	18,629	8,339	23,065	8,339	21,750	0.94	0.94

* / Ending stocks divided by consumption plus exports.

Subtotals and total include countries not shown.

** / Ending stocks divided by consumption.



2020/21 Supply and Use of Cotton by Country 1 June 2020

	Area	Yield	Prod	Beg Stocks	Imports	Cons	Exports	End Stocks	S/U *	S/MU **
	000 Ha	Kgs/Ha	000 Metric Tonnes						Ratio	Ratio
Canada				0.04	0.28	0.28		0.04	0.13	0.13
Cuba	4	271	1	1	2	3		1	0.19	0.19
Dom. Rep.					1	1		0.46	0.47	0.47
Mexico	191	1,650	315	226	128	396	97	176	0.36	0.44
USA	4,593	924	4,246	1,880	1	632	2,957	2,538	0.71	4.02
N. America	4,795	952	4,564	2,107	133	1,034	3,054	2,715	0.66	2.63
El Salvador				9	35	35		9	0.24	0.24
Guatemala				6	27	27		6	0.21	0.21
Honduras	0.10	318	0.03	0.27	0.00	0.00		0		
C. America	1	515	0.38	15	62	63	0.02	15	0.24	0.24
Argentina	360	657	237	428	1	135	102	428	1.81	3.18
Bolivia	4	641	3	2	1	3	0	2	0.50	0.53
Brazil	1,454	1,685	2,449	2,697	3	650	1,481	3,019	1.42	4.64
Chile				0.02	0.05	0.05		0.02	0.41	0.41
Colombia	18	847	16	4	20	36		4	0.11	0.11
Ecuador	1	440	1	3	10	11		3	0.31	0.31
Paraguay	10	420	4	2		1	3	2	0.54	1.95
Peru	23	819	19	46	40	59	1	46	0.78	0.79
Uruguay				0.00	0.01	0.01		0	0.06	0.06
Venezuela	14	392	6	3	5	10		3	0.31	0.31
S. America	1,885	1,450	2,734	3,185	80	905	1,587	3,508	1.41	3.88
Algeria				0	1	1		0.06	0.07	0.07
Egypt	102	660	67	98	76	100	44	98	0.69	0.99
Morocco				3	7	7		3	0.41	0.41
Sudan	180	722	130	32		18	100	44	0.37	2.42
Tunisia				3	12	12		3	0.22	0.22
N. Africa	282	700	197	136	96	138	144	148	0.52	1.07
Benin	700	450	315	196		1	273	237	0.86	246.54
Burkina Faso	735	283	208	139		3	188	156	0.81	51.87
Cameroon	250	559	140	77		2	127	88	0.68	46.23
Cent. Afr. Rep.	34	252	9	4			9	4	0.45	
Chad	252	298	75	20		0.20	61	34	0.55	168.02
Cote d'Ivoire	426	529	225	88		2	190	121	0.63	59.49
Guinea	13	287	4	2			4	2	0.45	
Madagascar				3				3		
Mali	782	390	305	77		2	299	81	0.27	40.50
Niger	5	470	2	0.24		1	1	0	0.11	0.25
Senegal	20	256	5	0.30		1	2	2	0.74	2.96
Togo	180	311	56	31			54	33	0.62	
F. Africa	3,396	396	1,344	638		12	1,209	761	0.62	64.25
Angola	3	308	1	0		1	0.26	0.29	0.34	0.48
Ethiopia	82	741	61	24	3	55	7	27	0.43	0.49
Ghana	15	375	6	12	1	1	6	12	1.75	9.24
Kenya	25	220	6	4	1	8		3	0.32	0.32
Malawi	84	249	21	12		3	18	12	0.55	3.87
Mozambique	146	152	22	15		1	24	11	0.45	8.81
Nigeria	258	205	53	17	1	28	26	17	0.32	0.63
South Africa	28	1,154	32	54	14	19	22	60	1.47	3.15
Tanzania	437	247	108	40		45	41	62	0.72	1.38
Uganda	101	426	43	25		4	39	25	0.59	5.89
Congo, Dr				2	7	7		2	0.30	0.30
Zambia	117	393	46	74		2	32	86	2.52	47.73
Zimbabwe	209	292	61	39		3	48	50	0.98	17.67
S. Africa	1,525	304	463	332	54	204	265	381	0.81	1.87
Kazakhstan	119	669	80	61	0.05	13	66	61	0.77	4.56
Kyrgyzstan	14	855	12	5	3	1	14	5	0.34	5.41
Tajikistan	196	538	106	45		15	91	45	0.43	3.04
Turkmenistan	556	564	314	123		143	146	148	0.51	1.03
Uzbekistan	900	712	641	144		578	64	144	0.22	0.25
C. Asia	1,786	645	1,152	378	3	750	381	403	2.28	0.54



2020/21 Supply and Use of Cotton by Country (cont'd) 1 June 2020

	Area	Yield	Prod	Beg Stocks	Imports	Cons	Exports	End Stocks	S/U *	S/MU **
	000 Ha	Kgs/Ha	000 Metric Tonnes							Ratio
Austria				1	3	3		1	0.20	0.20
Azerbaijan	100	677	68	51		29	38	51	0.75	1.72
Belarus				4	11	11		4	0.34	0.34
Belgium				1	7	3	4	1	0.19	0.46
Bulgaria	1	324	0.26	1	6	6	0.08	1	0.17	0.17
Czech Rep.				0.14	2	2		0	0.07	0.07
Denmark					0.01	0.01				
Estonia										
Finland										
France				1	9	8	1	1	0.11	0.12
Germany				8	17	14	3	8	0.45	0.54
Greece	277	1,173	325	51	7	16	325	42	0.12	2.59
Hungary				0				0		
Ireland				0	0	0		0	0.12	0.12
Italy				8	31	29	1	8	0.24	0.26
Latvia				0.01	0.26	0.20	0.06	0	0.03	0.04
Lithuania				0.10				0		
Moldova				1	2	2		1	0.34	0.34
Netherlands				0.45	4	4		0	0.11	0.11
Norway										
Poland				1	2	2	0.20	1	0.59	0.65
Portugal				7	36	36		7	0.20	0.20
Romania				0.04	0.33	0.33		0	0.11	0.11
Russia	0.02	1,759	0.04	6	22	22	0.04	6	0.26	0.26
Slovak Rep.				0				0		
Spain	66	1,061	70	45	3	3	70	45	0.62	13.83
Sweden				0.01	0.01	0.01		0	0.81	0.81
Switzerland				0.16	1	0.46	0.35	0	0.19	0.34
Ukraine				0.44	2	2		0	0.27	0.27
United Kingdom				0.03	0.25	0.25		0	0.11	0.11
Former Yugoslavia				6	7	7	1	5	0.66	0.76
Europe	444	1,043	463	193	171	201	444	182	0.28	0.91
Including EU-27	344	1,150	395	125	134	133	419	116	0.21	0.87
China	3,211	1,769	5,680	9,250	1,912	7,800	50	8,992	1.15	1.15
Hong Kong				30	0.23	0.39	0.17	30	52.42	75.45
Australia	152	2,375	361	34		6	270	119	0.43	20.75
Indonesia	5	621	3	62	637	640		62	0.10	0.10
Japan				7	50	51		6	0.13	0.13
Korea, D.R.				1	5	5		1	0.15	0.15
Korea, Rep.				38	143	143		38	0.26	0.26
Malaysia				13	202	135	67	13	0.07	0.10
Philippines	0.011	573	0.006	5	14	14		5	0.34	0.34
Singapore				0	6		6	0	0.05	
Taiwan				21	105	105		21	0.20	0.20
Thailand	2	522	1	56	226	217		66	0.30	0.30
Vietnam	0.30	582	0.36	200	1,421	1,420		201	0.14	0.14
E. Asia	159	2,296	365	436	2,809	2,735	344	531	0.17	0.19
Afghanistan	36	387	14	3		4	10	3	0.20	0.68
Bangladesh	46	772	35	458	1,196	1,214		475	0.39	0.39
India	12,065	475	5,735	2,849	360	4,752	893	3,299	0.58	0.69
Myanmar	239	634	152	59	25	187		49	0.26	0.26
Pakistan	2,368	552	1,307	682	864	2,160	10	682	0.31	0.32
Sri Lanka				0	2	2		0	0.11	0.11
S. Asia	14,757	491	7,245	4,051	2,447	8,321	1,055	4,509	0.49	0.54
Iran	71	711	50	58	54	104		58	0.56	0.56
Iraq	9	362	3	2	5	8		2	0.24	0.24
Israel	4	1,851	8	2			8	2	0.28	
Syria	18	973	18	9		15	3	8	0.45	0.55
Turkey	520	1,583	823	926	622	1,431	67	873	0.58	0.61
Sub Total	626	1,445	904	1,000	699	1,577	79	946	0.57	0.60
World Total	32,883	764	25,118	21,754	8,470	23,748	8,470	23,124	0.97	0.97

*/ Ending stocks divided by consumption plus exports.

Subtotals and total include countries not shown.

**/ Ending stocks divided by consumption.